



PAH QUARTERLY

February is Dental Month!

During the month of February, we will be offering a 10% discount on ultrasonic dental cleanings. In addition, we will be giving a free toothbrush and sample toothpaste with each cleaning.



Large Animal Vaccine Schedule

As the snow melts and the days start getting longer, we get the feeling of spring being in the air. Our pets also feel the positive bounce of the season, especially the ones that spend most of their time outdoors. With the coming of spring, we need to keep our animals' health in mind, and prevention tends to be a great step towards maintaining this health. As with all mammals, our horses and livestock benefit from annual vaccinations. The most important of these vaccinations for our equine friends include a yearly rabies vaccine as well as a Triple E vaccine. Triple E prevents three forms of Equine Encephalitis virus, Eastern,

Western, and Venezuelan. This virus causes inflammation of the coating of the nervous system (brain and spinal cord), and the best treatment is prevention. Triple E is spread to horses via mosquito bites. If your horse does not travel and stays in its own herd, usually rabies and Triple E are the best preventatives. Other vaccines that are available include Rhinopneumonitis and

Equine Influenza, also known as the Rhino/Flu vaccine. These diseases are usually spread via horse to horse contact, so unless your horse will co-mingle with others outside of its herd, this vaccine is usually not required for home-bound ponies. The Strangles vaccine is usually warranted for horses that travel to outside barns. However, this vaccine tends to cause more adverse reactions than the others (such as lethargy or discomfort). Prevention against tetanus and West Nile is also available. In this part of the country, West Nile is not really a great concern for our horses. It's important to protect your horse from tetanus, because something as simple as getting a nail in the hoof is a good way to obtain this bacterial toxin and cause the so-called "Lock-Jaw" symptoms it is known for. Horses are quite susceptible to this disease, so again, vaccinating for tetanus is recommended. In terms of baby colts and fillies born in the spring, we recommend getting them started on their vaccines at about 5-6 months of age. We recommend giving them a rabies vaccine and their first Triple E, followed by boosters for Triple E and first Rhino/Flu in about a month

(usually at the time a colt is gelded). One month later, we recommend that colts and fillies be boosted for Rhino/Flu so that the vaccine is good for a year.

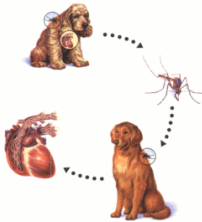
In terms of our other large animal companions, annual vaccinations for rabies, clostridial disease, and tetanus are recommended for cattle, goats, sheep, alpacas, and llamas. These vaccines are usually boosted after first CDT is given as a calf, lamb, kid or cria. The practice of high quality medicine entails yearly preventive care, and usually the best time for your hooved friend to obtain these preventatives is in the spring. We at Pembroke Animal Hospital become quite busy this time of year! So when our vet truck is coming to your town, please be sure to set a time when either Dr. Peck, Dr. Luksic, or Dr. Murdock can tend to your large animal friend hanging out in the barn. Happy spring! It will be here before you know it!

Inside this issue:

Heartworm Disease	2
Flea and Tick Preventive	2
Lyme Vaccine	2
NSAIDS and Blood Work	3
Senior Care	4
Joint Supplements	5
Large Animal Routes	6

Heartworm Disease

Heartworm disease is caused by infestation with *Dirofilaria immitis*. This is a parasite that moves through the blood stream and lives in and around the heart. The parasites grow

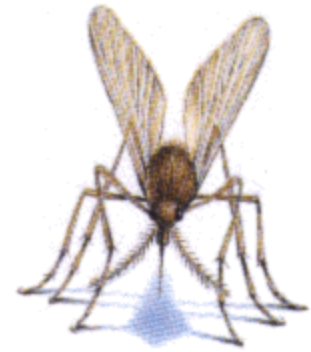


The cycle of contracting heartworm disease

in those locations and can completely block large blood vessels. Mosquitoes carry the *Dirofilaria immitis* parasite. When mos-

quitoes bite your dog or cat, they can infect the animal. If your animal is carrying microfilaria (immature parasites) in its blood stream, mosquitoes can also carry those parasites to other animals. Many animals that become infected with heartworm disease do not show clinical signs of illness for a long time. For that reason, we recommend annual examination and heartworm testing for most canine patients. Some signs of disease that may be found are heart murmur, cough, exercise intolerance, weight loss, or signs

of heart failure. Treatment is available if a dog is found to be positive for adult parasites. Cats can also develop heartworm disease. Both indoor and outdoor cats can be affected. Unfortunately, diagnosis and treatment of heartworm disease in cats is much more difficult. Heartworm preventatives are available. Please speak to your doctor if you have questions concerning your cat.



Remember to apply the medication once every month to ensure protection against flea infestation tick bites that can transmit disease.

Flea and Tick Preventive

We have multiple options available for flea and tick preventative for your pets. The two main products we carry are Frontline and Advantage/Advantix. Frontline protects dogs and cats from fleas and ticks. Advantage is strictly for flea protection. Advantix, which is only available for dogs, protects from fleas, ticks and other

flying insects

We recommend using these products during the months of April through December when the fleas and ticks are active in the environment. The medicine comes in a tube as a topical solution that is applied directly to the skin, where it gradually spreads over the entire ani-

mal.

Remember to apply the medication once every month to ensure protection against flea infestation and tick bites that can transmit disease.



Lyme Vaccine

Due to the abundance of ticks being found on dogs, even dogs treated with tick preventative, we recommend vaccination with the Lyme vaccine. Our goal with the vaccine is to

prevent clinical syndromes associated with exposure to the organism that causes Lyme disease. Unfortunately, many dogs that are regularly treated with the preventative are still ex-

posed. A scanning blood test can help to determine if an exposure has occurred. Vaccination may help dogs that are exposed so that they do not develop potentially life-threatening illness.



NSAIDS and Blood Work

Some human medications (Ibuprophen, Piroxicam and naproxen) can be very toxic to our animals. Even Tylenol (Acetaminophen) can be dangerous. For this reason, drug companies have formulated non-steroidal anti-inflammatory medica-

tions such as Metacam, Previcox, and Rimadyl that are safer for our patients. We advise that, if possible, these veterinary recommended products be given as needed. If they must be given every day, we advise that blood work be

done every six to twelve months to make sure that there are no problems with tolerance of the medications.

Senior Care

Our senior patients have special needs. They can suffer from osteoarthritis and joint pain, chronic and progressive metabolic diseases that can cause kidney and liver dysfunction, heart disease, and many other age related problems. In addition, we see an increase in the development of masses, lumps, and bumps. Just like humans, our patients can

also experience blindness and hearing loss in their elder years. Some things we can do to ease the transition into senior years is to offer joint supplements to help lubricate joints and potentially decrease pain and inflammation. Blood work performed once to twice annually is recommended to monitor any metabolic disease. X-rays can help in

monitoring lumps, bumps, and masses and tracking growth.

The continuation of annual exams is the most critical component of senior care, because early detection of these conditions is the key to ensuring the health and longevity of your pet.

“Blood work performed once to twice annually is recommended to monitor any metabolic disease.”



Arthritis and Joint Supplements

As our pets get older, sometimes they can develop difficulties getting around. The first visible signs of osteoarthritis pain may come in the form of a limp, decreased activity, stiffness, trouble getting up or lying down, and difficulty going up and down stairs and jumping into the car. The pain associated with arthritis can make it difficult

for some to participate in their favorite activities. We carry a few different products that can help with arthritis and joint stiffness. Glucosamine supplements can help improve joint comfort and provide support needed to remain healthy and active. We carry a product called Lubrichon for dogs that comes in a powder form as well as a chewable tablet. An-

other product called Cosequin is available for dogs and cats in tablet or capsule form. We also carry a few other products such as an injectable medication called Adequan and others that come as a palatable chewable treat. Along with exercise and a healthy diet, joint supplements can help your pet lead a happy and long life.

Pembroke Animal Hospital

Pembroke Animal
Hospital
13 Sheep Davis Rd
Pembroke, NH 03275

Phone: 603-228-
0019
Fax: 603-228-9378
On the Web:
pembroke-animal-
hospital.com

Drs. Julian, Peck, Reeve, Luksic and Murdock are available for large and small animal needs. Our facility on Sheep Davis Road services our small animal patients, and Drs. Peck, Luksic and Murdock are available to come to your farm for large animal patients. We do routine surgeries in-house, and are associated with many referral clinics to send our patients to if necessary.

Pembroke Animal Hospital also has boarding, grooming, and daycare facilities.

Please feel free to contact us at the clinic regarding any information that you may need to ensure your pet's health and longevity.

Scheduled Routes for Large Animal Spring Vaccines



Spring is right around the corner...

We are excited to have three large animal veterinarians with us this spring to visit all our large animal clients for spring vaccines. This year joining Dr. Donna Peck will be Dr. Christina Murdock and Dr. Rachel Luksic. We will be scheduling farm calls in certain towns on certain days. We have sent out postcards to each client giving a few dates to choose from for your specific town. If you choose a date that we will be in your town, we will give you a \$15.00 dis-

count off the cost of the farm call fee.

When you call to schedule your appointment, please have a date selected and tell us how many animals you have, and if you need anything in addition to vaccines such as coggins, teeth floating, x-rays, or ultrasounds. We will confirm where your animals are located and that we have current directions to your place. We are looking forward to seeing you and your four legged family this spring!!

